

To input VIDEO & CONV GEN. To input RGB-TTL

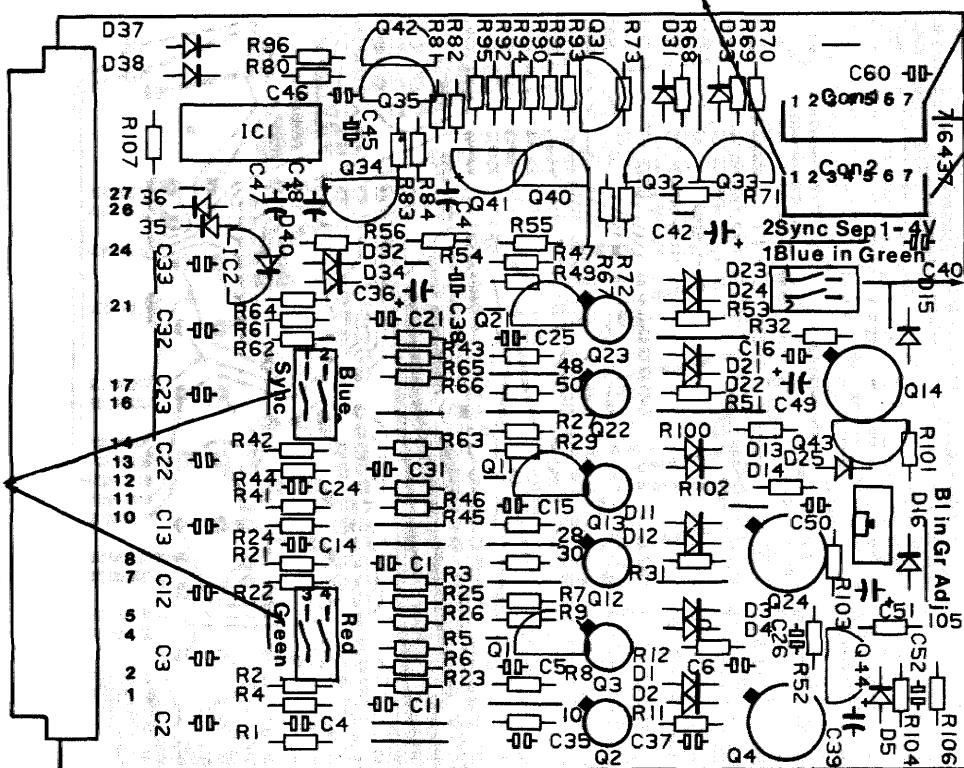
**A**  
To FRAME  
761395

**L**

Termination  
Switches

- 1) Sync
- 2) Blue
- 3) Green
- 4) Red

- 1) Insertion
  - 2) Blue
  - 3) Blue
  - 4) Green
  - 5) Green
  - 6) Red
  - 7) Red
- 1) Sync level
  - 2) Blue in Green



DC MEASUREMENTS

- Employed meter : FLUKE 8010-A
- For these measurements, no external signal was supplied to the projector, nor was the internal convergence signal used.
- Preparation : - terminate the R, G and B in- and outputs with 75 ohm
  - close switch "Blue in green"
  - open switch "Sync level"
  - check if the supply voltage +17V is adjusted correctly
- ALL MEASURED VALUES ARE EXPRESSED IN VOLT (DC)

Supply voltages : +C = 12.06 V  
 -C = -11.76 V

GLEICHSPANNUNGSMESSUNGEN

- Verwandtes Messgerät : FLUKE 8010-A
- Für diese Messungen wurde weder das innere Konvergenzsignal gewählt, noch wurde ein externes Signal angeschlossen.
- Vorbereitung : - schließen Sie die R, G und B Ein - und Ausgänge ab mit 75 Ohm
  - schließen Sie Schalter "Blue in green"
  - öffnen Sie Schalter "Sync level"
  - sehen Sie nach, ob die Speisungsspannung +17V richtig eingestellt ist
- ALLE MESSWERTE SIND AUSGEDRÜCKT IN VOLT (DC)

Speisungsspannungen : +C = 12.06 V  
 -C = -11.76 V

	Q1	Q2	Q3	Q4	Q11	Q12	Q13	Q14	Q21	Q22	Q23	Q24
c	-3.3	10.2	12.2	2.0	-3.5	10.2	12.2	2.6	-4.0	9.3	10.0	2.8
b	-9.6	-1.8	-1.2	10.2	-9.6	-2.0	-1.4	10.2	-9.6	2.2	-2.3	9.3
e	-10.3	-2.5	-1.9	10.8	-10.3	-2.7	-2.0	10.9	-10.2	-2.9	-3.0	9.9

	Q31	Q32	Q33	Q34*	Q35*	Q40*	Q41*	Q42*	Q43	Q44
c	5.2	-12.1	-6.0	11.3	12.2	9.4	11.5	12.2	2.0	2.5
b	8.8	0.4	0.5	11.5	12.8	1.8	9.4	12.8	9.7	10.1
e	9.5	1.1	1.1	10.8	12.1	1.2	8.7	12.1	10.4	10.8

\* : Remarks : - to measure Q34 and Q35, the input selection switch on the Control switch box has to be placed in the position "RGB/s"  
 - to measure Q40, 41 and 42, the input selection switch on the Control switch box has to be placed in the position "RGsB".

\* : Bemerkungen : - für das Messen von Q34 und Q35 muß der Schalter für die Wahl des Eingangssignals auf dem Modul Control switch box in der Position "RGB/s" stehen  
 - für das Messen von Q40, 41 und 42, muß der Schalter für die Wahl des Eingangssignals auf dem Modul Control switch box in der Position "RGsB" stehen

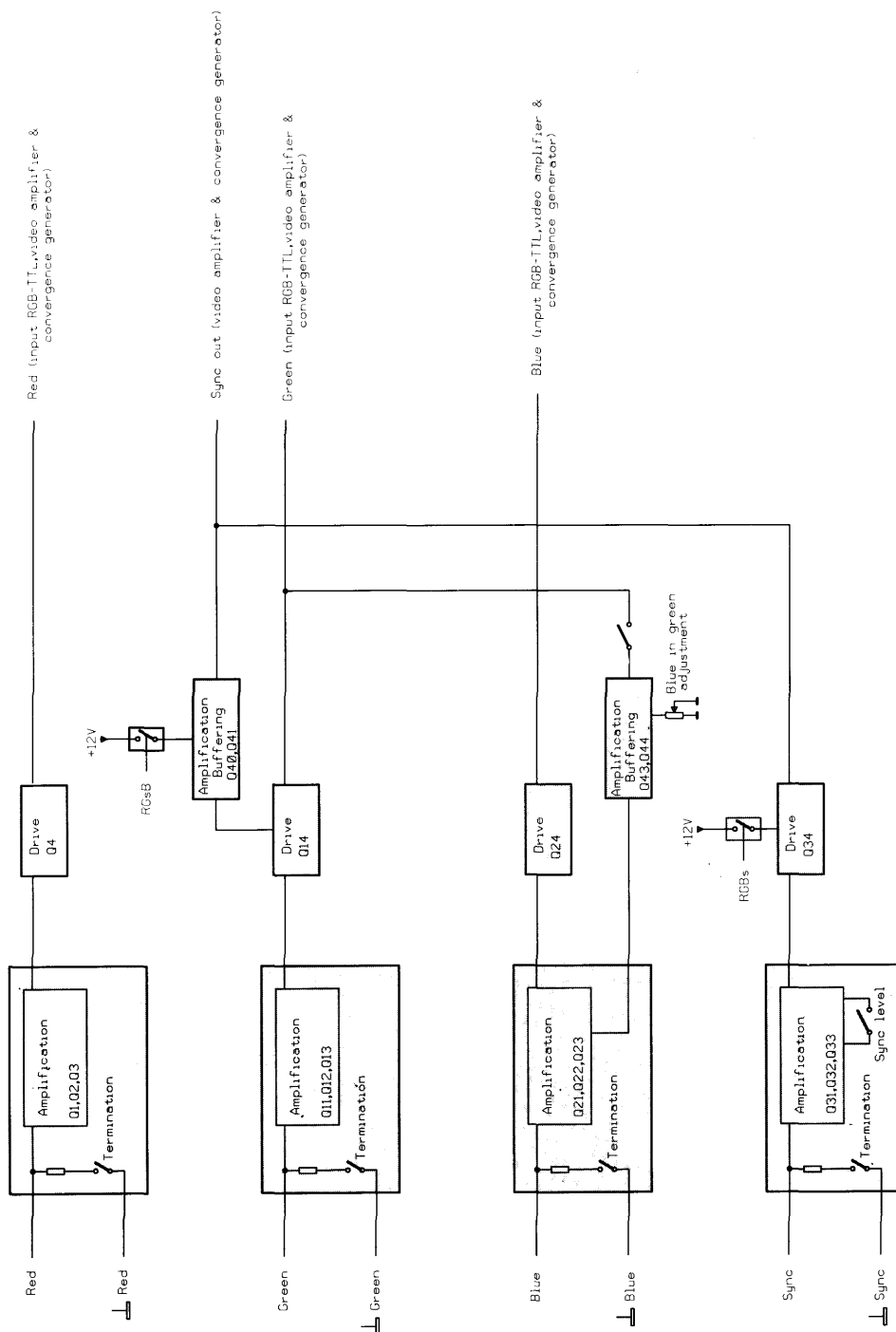
ITEM NO.	SIT.	DESCRIPTION	ITEM NO.	SIT.	DESCRIPTION
11 3722	C..1	CAPACITOR POME 68K K5 63	71 6437	PC..	PC GRAPHICS RGB ANA 761443
11 1680	C..2	CAPACITOR ELRABI 10M V 40	13 1411	Q..1	TRANSISTOR BC549C,BC239C
11 1680	C..3	CAPACITOR ELRABI 10M V 40	13 1491	Q..2	TRANSISTOR BSX20,2N2369
11 2235	C..4	CAPACITOR NPO MI 27P G5 63	13 1491	Q..3	TRANSISTOR BSX20,2N2369
11 2231	C..5	CAPACITOR NPO MI 12P G5 63	13 2904	Q..4	TRANSISTOR 2N2905A
11 22395	C..6	CAPACITOR NPO MI 56P G5 63	13 1411	Q.11	TRANSISTOR BC549C,BC239C
11 3722	C.11	CAPACITOR POME 68K K5 63	13 1491	Q.12	TRANSISTOR BSX20,2N2369
11 1680	C.12	CAPACITOR ELRABI 10M V 40	13 1491	Q.13	TRANSISTOR BSX20,2N2369
11 1680	C.13	CAPACITOR ELRABI 10M V 40	13 2904	Q.14	TRANSISTOR 2N2905A
11 2235	C.14	CAPACITOR NPO MI 27P G5 63	13 1411	Q.21	TRANSISTOR BC549C,BC239C
11 2231	C.15	CAPACITOR NPO MI 12P G5 63	13 1491	Q.22	TRANSISTOR BSX20,2N2369
11 2240	C.16	CAPACITOR NPO MI 68P J5 63	13 1491	Q.23	TRANSISTOR BSX20,2N2369
11 3722	C.21	CAPACITOR POME 68K K5 63	13 2904	Q.24	TRANSISTOR 2N2905A
11 1680	C.22	CAPACITOR ELRABI 10M V 40	13 14182	Q.31	TRANSISTOR BC549C,BC309C
11 1680	C.23	CAPACITOR ELRABI 10M V 40	13 14182	Q.32	TRANSISTOR BC549C,BC309C
11 2235	C.24	CAPACITOR NPO MI 27P G5 63	13 14182	Q.33	TRANSISTOR BC549C,BC309C
11 2232	C.25	CAPACITOR NPO MI 15P G5 63	13 14295	Q.34	TRANSISTOR BC549B,
11 22395	C.26	CAPACITOR NPO MI 56P G5 63	13 14295	Q.35	TRANSISTOR BC549B,
11 3722	C.31	CAPACITOR POME 68K K5 63	13 14295	Q.40	TRANSISTOR BC549B,
11 1680	C.32	CAPACITOR ELRABI 10M V 40	13 14295	Q.41	TRANSISTOR BC549B,
11 1680	C.33	CAPACITOR ELRABI 10M V 40	13 14295	Q.42	TRANSISTOR BC549B,
11 3724	C.35	CAPACITOR POME 100K K5 63	13 2507	Q.43	TRANSISTOR BF324
11 1476	C.36	CAPACITOR ELPR 47M Z5 25	13 2507	Q.44	TRANSISTOR BF324
11 3724	C.37	CAPACITOR POME 100K K5 63	10 1124	R..1	RESISTOR CF 100E J OW25
11 3724	C.38	CAPACITOR POME 100K K5 63	10 11231	R..2	RESISTOR CF 75E J OW25
11 1476	C.39	CAPACITOR ELPR 47M Z5 25	10 1141	R..3	RESISTOR CF 2K7 J OW25
11 3724	C.40	CAPACITOR POME 100K K5 63	10 1124	R..4	RESISTOR CF 100E J OW25
11 1531	C.41	CAPACITOR ELPRMI 10M M5 35	10 1155	R..5	RESISTOR CF 39K J OW25
11 1476	C.42	CAPACITOR ELPR 47M Z5 25	10 1155	R..6	RESISTOR CF 39K J OW25
11 3730	C.45	CAPACITOR POME 330K K5 63	10 1126	R..7	RESISTOR CF 150E J OW25
11 3724	C.46	CAPACITOR POME 100K K5 63	10 1128	R..8	RESISTOR CF 220E J OW25
11 1546	C.47	CAPACITOR ELPRMI 1M M5 50	10 1128	R..9	RESISTOR CF 220E J OW25
11 1546	C.48	CAPACITOR ELPRMI 1M M5 50	10 1123	R.10	RESISTOR CF 82E J OW25
11 1476	C.49	CAPACITOR ELPR 47M Z5 25	10 1133	R.11	RESISTOR CF 560E J OW25
11 2234	C.50	CAPACITOR NPO MI 22P G5 63	10 1123	R.12	RESISTOR CF 82E J OW25
11 1476	C.51	CAPACITOR ELPR 47M Z5 25	10 1124	R.21	RESISTOR CF 100E J OW25
11 2229	C.52	CAPACITOR NPO MI 8P2 C5 63	10 11231	R.22	RESISTOR CF 75E J OW25
11 4079	C.60	CAPACITOR POMEPO 100K M5 63	10 1141	R.23	RESISTOR CF 2K7 J OW25
13 1621	D..1	DIODE 1N4148 SWITCH	10 1124	R.24	RESISTOR CF 100E J OW25
13 1621	D..2	DIODE 1N4148 SWITCH	10 1155	R.25	RESISTOR CF 39K J OW25
13 1621	D..3	DIODE 1N4148 SWITCH	10 1155	R.26	RESISTOR CF 39K J OW25
13 1621	D..4	DIODE 1N4148 SWITCH	10 1126	R.27	RESISTOR CF 150E J OW25
13 1621	D..5	DIODE 1N4148 SWITCH	10 1128	R.28	RESISTOR CF 220E J OW25
13 1621	D.11	DIODE 1N4148 SWITCH	10 1128	R.29	RESISTOR CF 220E J OW25
13 1621	D.12	DIODE 1N4148 SWITCH	10 1122	R.30	RESISTOR CF 68E J OW25
13 1621	D.13	DIODE 1N4148 SWITCH	10 1133	R.31	RESISTOR CF 560E J OW25
13 1621	D.14	DIODE 1N4148 SWITCH	10 1123	R.32	RESISTOR CF 82E J OW25
13 1621	D.15	DIODE 1N4148 SWITCH	10 1124	R.41	RESISTOR CF 100E J OW25
13 1621	D.16	DIODE 1N4148 SWITCH	10 11231	R.42	RESISTOR CF 75E J OW25
13 1621	D.21	DIODE 1N4148 SWITCH	10 1141	R.43	RESISTOR CF 2K7 J OW25
13 1621	D.22	DIODE 1N4148 SWITCH	10 1124	R.44	RESISTOR CF 100E J OW25
13 1621	D.23	DIODE 1N4148 SWITCH	10 1155	R.45	RESISTOR CF 39K J OW25
13 1621	D.24	DIODE 1N4148 SWITCH	10 1155	R.46	RESISTOR CF 39K J OW25
13 1621	D.25	DIODE 1N4148 SWITCH	10 1126	R.47	RESISTOR CF 150E J OW25
13 1621	D.31	DIODE 1N4148 SWITCH	10 1128	R.48	RESISTOR CF 220E J OW25
13 1621	D.32	DIODE 1N4148 SWITCH	10 1128	R.49	RESISTOR CF 220E J OW25
13 1621	D.33	DIODE 1N4148 SWITCH	10 1117	R.50	RESISTOR CF 27E J OW25
13 1621	D.34	DIODE 1N4148 SWITCH	10 1133	R.51	RESISTOR CF 560E J OW25
13 1621	D.35	DIODE 1N4148 SWITCH	10 1123	R.52	RESISTOR CF 82E J OW25
13 1621	D.36	DIODE 1N4148 SWITCH	10 1132	R.53	RESISTOR CF 470E J OW25
13 1646	D.37	DIODE 1N4007 RECTIFIER	10 1141	R.54	RESISTOR CF 2K7 J OW25
13 1646	D.38	DIODE 1N4007 RECTIFIER	10 1153	R.55	RESISTOR CF 27K J OW25
13 1646	D.40	DIODE 1N4007 RECTIFIER	10 1112	R.56	RESISTOR CF 10E J OW25
13 4002	I..1	INTEGRATED CIRCUIT 7812	10 1124	R.61	RESISTOR CF 100E J OW25
13 4034	I..2	INTEGRATED CIRCUIT 79L12	10 11231	R.62	RESISTOR CF 75E J OW25
10 6824	P..1	TRIMPOT CEMV 200E K OW50	10 1141	R.63	RESISTOR CF 2K7 J OW25
			10 1124	R.64	RESISTOR CF 100E J OW25

ITEM NO.	SIT.	DESCRIPTION	ITEM NO.	SIT.	DESCRIPTION
10 1155	R.65	RESISTOR CF 39K J 0W25	10 1148	R.96	RESISTOR CF 10K J 0W25
10 1155	R.66	RESISTOR CF 39K J 0W25	10 1155	R100	RESISTOR CF 39K J 0W25
10 1128	R.67	RESISTOR CF 220E J 0W25	10 1155	R101	RESISTOR CF 39K J 0W25
10 1134	R.68	RESISTOR CF 680E J 0W25	10 1127	R102	RESISTOR CF 180E J 0W25
10 1134	R.69	RESISTOR CF 680E J 0W25	10 1123	R103	RESISTOR CF 82E J 0W25
10 1132	R.70	RESISTOR CF 470E J 0W25	10 1155	R104	RESISTOR CF 39K J 0W25
10 1136	R.71	RESISTOR CF 1K J 0W25	10 1155	R105	RESISTOR CF 39K J 0W25
10 1140	R.72	RESISTOR CF 2K2 J 0W25	10 1126	R106	RESISTOR CF 150E J 0W25
10 1145	R.73	RESISTOR CF 5K6 J 0W25	10 1235	R107	RESISTOR CF 820E J 0W50
10 1148	R.80	RESISTOR CF 10K J 0W25			
10 1144	R.81	RESISTOR CF 4K7 J 0W25	31 3531	001.	CONNECTOR EURO MOBSE P64 KEY
10 1160	R.82	RESISTOR CF 100K J 0W25	36 7699	0011	RIVET CHOBERT D2,38 L6,35
10 1124	R.83	RESISTOR CF 100E J 0W25	31 3586	002.	CONNECTOR MT MOBTE P 7 2,5
10 1140	R.84	RESISTOR CF 2K2 J 0W25	32 4190	003.	SWITCH DIL 1A 2P TE
10 1159	R.90	RESISTOR CF 82K J 0W25	13 3013	005.	TRANSISTOR MOUNTING PAD TO-5
10 1150	R.91	RESISTOR CF 15K J 0W25	36 20216	006.	SCREW DIN84 M 3 X 6 MP-
10 1140	R.92	RESISTOR CF 2K2 J 0W25	36 75256	0061	WASHER DIA 3,1 X 6,2 TO,6 J
10 1136	R.93	RESISTOR CF 1K J 0W25	36 61026	0062	NUT DIN934 M 3 HEXAGONAL
10 1124	R.94	RESISTOR CF 100E J 0W25	30 2108	007.	CORE TUBE 1,3/3,5X3
10 1140	R.95	RESISTOR CF 2K2 J 0W25			



# FUNCTIONAL BLOCK DIAGRAM

## RGB ANALOG INPUT



Modifications reserved

Name	Input RGB Analog	Article nr.	76 1443
Date	07/01/88	Drawn	PG
		Checked	CD
BARCO ELECTRONIC NV		Noordleen 5 8728 Kuurne - Belgium	